





**\*\*AVAILABLE FEBRUARY 2025\*\* \*\*STUNNING NEWLY REFURBISHED MAISONETTE APARTMENT\*\* \*\*FURNISHED/ UNFURNISHED\*\*** A fabulous, newly renovated first & second floor maisonette found on Osborne Road in central Jesmond - locations do not come much better than this! Boasting brand new kitchen, two brand new bathrooms, new flooring throughout and fully redecorated, this outstanding residence is not to be missed!

Walking distance to a choice of shops, bars & restaurants, the accommodation briefly comprises a well kept communal entrance hall with stairs to the first floor. The apartment itself has an entrance hallway leading to brand newly fitted bathroom WC; newly installed second shower room WC; 16ft newly fitted modern kitchen with appliances and space for dining table & chairs; 16ft lounge to the front, with feature fireplace and a pleasant outlook; stairs leading to the 2nd floor internally lead to two bedrooms, both spacious doubles with dormer windows. Externally there is on street permit parking to the front.

Newly redecorated and with new flooring throughout, this home is available on either a furnished or unfurnished basis, with gas central heating and double glazed windows. Perfect for either a professional couple or professional sharers alike.

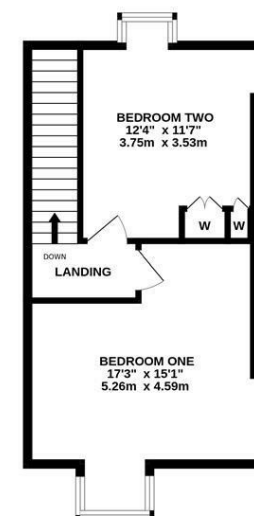
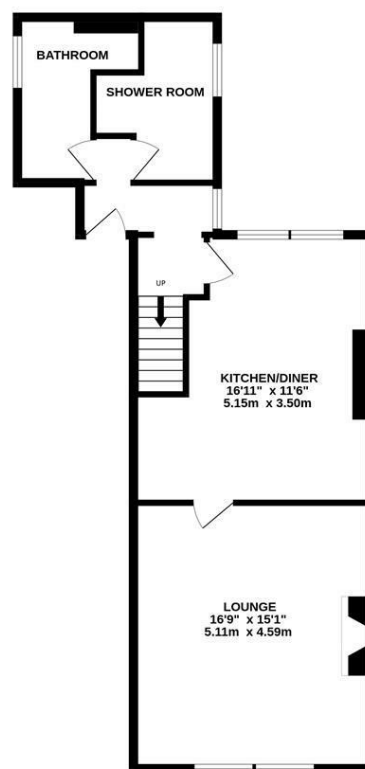
Available 28th February 2025 | £1,500pcm | Newly Refurbished Throughout | Furnished/ Unfurnished | 1st & 2nd Floor Maisonette | Conversion Apartment | 1,054 Sq. ft (97.9 m2) | 16ft Lounge | Brand New Kitchen/Diner | Brand New Bathroom WC | Brand New Shower Room WC | Two Double Bedrooms | Excellent Location | GCH & DG | Newly Redecorated Throughout | New Flooring Throughout | On Street Permit Parking | Council Tax Band: C | EPC Rating: E (done prior to renovations)

**£1,500 PCM**



FIRST FLOOR  
650 sq.ft. (60.4 sq.m.) approx.

2ND FLOOR  
404 sq.ft. (37.6 sq.m.) approx.



TOTAL FLOOR AREA : 1054 sq.ft. (97.9 sq.m.) approx.

Whilst every attempt has been made to ensure the accuracy of the floorplan contained here, measurements of doors, windows, rooms and any other items are approximate and no responsibility is taken for any error, omission or mis-statement. This plan is for illustrative purposes only and should be used as such by any prospective purchaser. The services, systems and appliances shown have not been tested and no guarantee as to their operability or efficiency can be given.  
Made with Metropix ©2025

**IMPORTANT NOTE:** These particulars and the descriptions and measurements herein do not constitute representation and whilst every effort has been made to ensure accuracy, this cannot be guaranteed.

